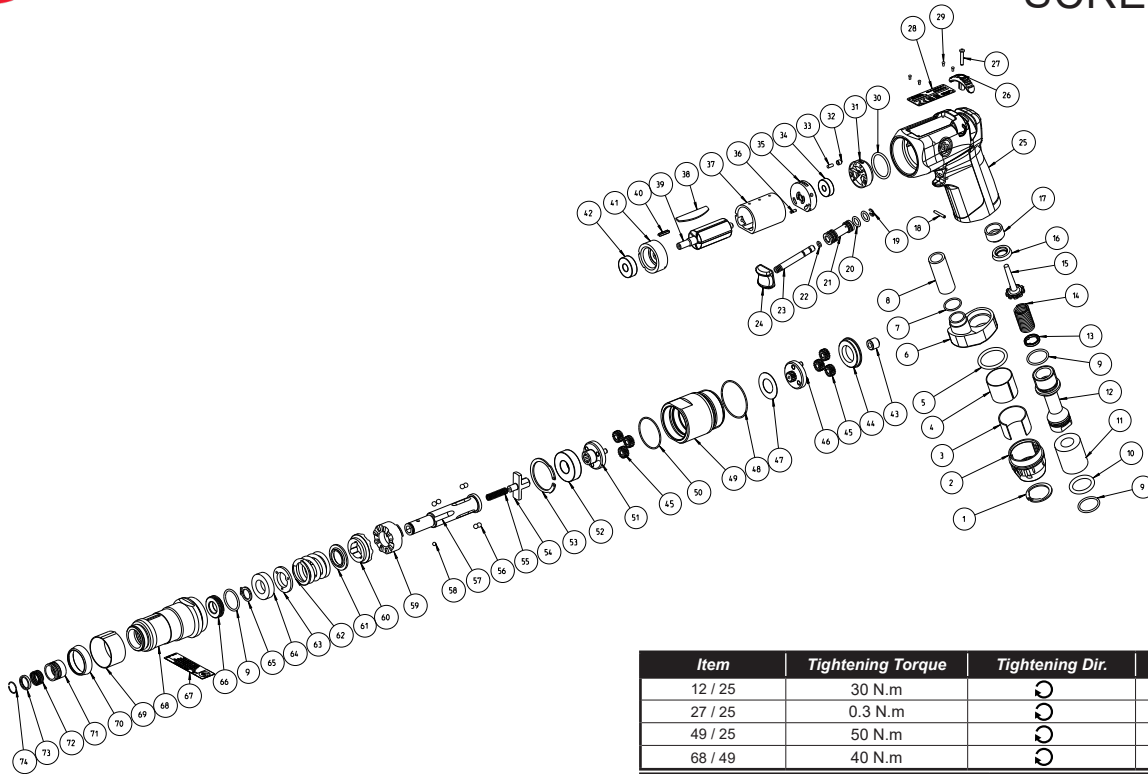




**Chicago
Pneumatic**

CP2812 Model C SCREWDRIVER



| Item No. | Part No. | Description | Q'ty |
|----------|-------------------|---------------------------|------|
| 12 | 6154501415 | Air Inlet 1/4" | 1 |
| 30 | | O-ring 21x2 | 1 |
| 31 | 6154501435 | Reversing Valve | 1 |
| 37 | 6154501685 | Cylinder | 1 |
| 38 | 6154501675 | Vanes, Set of 5 | 1 |
| 39 | 6154501665 | Rotor | 1 |
| 43 | 6154501825 | Sun wheel | 1 |
| 44 | 6154501815 | Washer | 1 |
| 47 | | Washer | 1 |
| 48 | | O-ring 28x1 | 1 |
| 49 | 6154501795 | Gear rim | 1 |
| 50 | | O-ring 32.1x 1.6 | 1 |
| 52 | | Ball bearing ISO 6001-2Z | 1 |
| 53 | | Circlip | 1 |
| 57 | 6154501745 | Clutch shaft | 1 |
| 62 | 6154501765 | Clutch spring | 1 |
| A | 6154501425 | Deflector Kit | |
| 1 | | Circlip | 1 |
| 2 | | Exhaust deflector | 1 |
| 3 | | Filter | 1 |
| 4 | | Silencer | 1 |
| 5 | | O-ring 22.22x2.62 | 1 |
| 11 | | Silencer | 1 |
| B | 6154501575 | Exhaust Kit | |
| 6 | | Exhaust casing | 1 |
| 7 | | O-ring 14x1.2 | 1 |
| 8 | | Tube | 1 |
| 9 | | O-ring 17.1x1.6 | 1 |
| 10 | | O-ring 17.5x3 | 1 |
| C | 6154501405 | Valve Kit | |
| 9 | | O-ring 17.1x1.6 | 1 |
| 13 | | Strainer | 1 |
| 14 | | Spring | 1 |
| 15 | | Valve | 1 |
| 16 | | Valve seat | 1 |
| 17 | | Valve seat support | 1 |
| D | 6154501395 | Trigger Kit | |
| 18 | | Pin 2x14 | 1 |
| 19 | | Circlip | 1 |
| 20 | | O-ring 7.1x1.6 | 2 |
| 21 | | Valve liner | 1 |
| 22 | | O-ring 3.6x1 | 1 |
| 23 | | Pin | 1 |
| 24 | | Trigger | 1 |
| E | 6154501585 | Reversing Knob Kit | |
| 26 | | Reverse Knob | 1 |
| 27 | | Screw | 1 |

| Item | Tightening Torque | Tightening Dir. | Glue /Grease |
|---------|-------------------|-----------------|--------------|
| 12 / 25 | 30 N.m | ⌚ | |
| 27 / 25 | 0.3 N.m | ⌚ | |
| 49 / 25 | 50 N.m | ⌚ | |
| 68 / 49 | 40 N.m | ⌚ | |

| Lubrication | |
|-------------|--------------|
| Gearbox | MOLYKOTE BR2 |

| Item No. | Part No. | Description | Q'ty |
|-----------|-------------------|--|------|
| F | 6154501655 | Front End Plate Kit | |
| 40 | | Key | 1 |
| 41 | | End plate | 1 |
| 42 | | Ball bearing ISO 607-2Z | 1 |
| G | 6154501695 | Rear End Plate Kit | |
| 32 | | Retainer pin | 1 |
| 33 | | Spring | 1 |
| 34 | | Ball bearing ISO 625-2Z | 1 |
| 35 | | End plate | 1 |
| 36 | | Pin | 1 |
| F | 6154501705 | Quick Change Chuck Kit | |
| 58 | | Ball Ø 3 mm | 1 |
| 71 | | Sleeve | 1 |
| 72 | | Compression spring | 1 |
| 73 | | Ring | 1 |
| 74 | | Snap ring | 1 |
| H | 6154501715 | Clutch Housing Kit | |
| 68 | | Clutch housing | 1 |
| 69 | | Protection ring | 1 |
| 70 | | Front protection | 1 |
| J | 6154501725 | Bushing Kit | |
| 9 | | O-ring | 1 |
| 66 | | Bushing | 1 |
| K | 6154501735 | Driver Kit | |
| 54 | | Driver | 1 |
| 55 | | Spring | 1 |
| L | 6154501755 | Clutch Jaw Kit | |
| 56 | | Balls Ø 4 mm | 6 |
| 58 | | Clutch jaw | 1 |
| 60 | | Coupling ring | 1 |
| 61 | | Sleeve | 1 |
| M | 6154501775 | Adjustment Kit | |
| 63 | | Washer | 1 |
| 64 | | Nut | 1 |
| 65 | | Circlip | 1 |
| N | 6154501785 | Planetary Gear Kit | |
| 45 | | Gear wheel | 3 |
| 46 | | Planetary shaft | 1 |
| O | 6154501805 | Planetary Gear Kit | |
| 45 | | Gear wheel | 3 |
| 51 | | Planetary shaft | 1 |
| TK | 6154502385 | Tune up Kit (Includes #3, 4, 5, 7, 9 (x3), 10, 11, 16, 20 (x2), 22, 30, 32, 33, 36, 38, 40, 47, 48, 50, 53, 58, 65, 74) | |
| | | Included accessories | |
| | 6154501835 | Adjustment key | 1 |
| | 69773 | Allen key 1/4" | 1 |
| | | Optional accessories | |
| | 6151820078 | Side handle | |

| | | |
|--|------------|---------------------|
| | 6151820061 | Safety Instructions |
| | 6158715340 | Warning label |

Spare parts without part number are not sold separately

High wear parts are underlined.

Contact us at www.cp.com

09/06/2022
6151820058 Rev. : 00