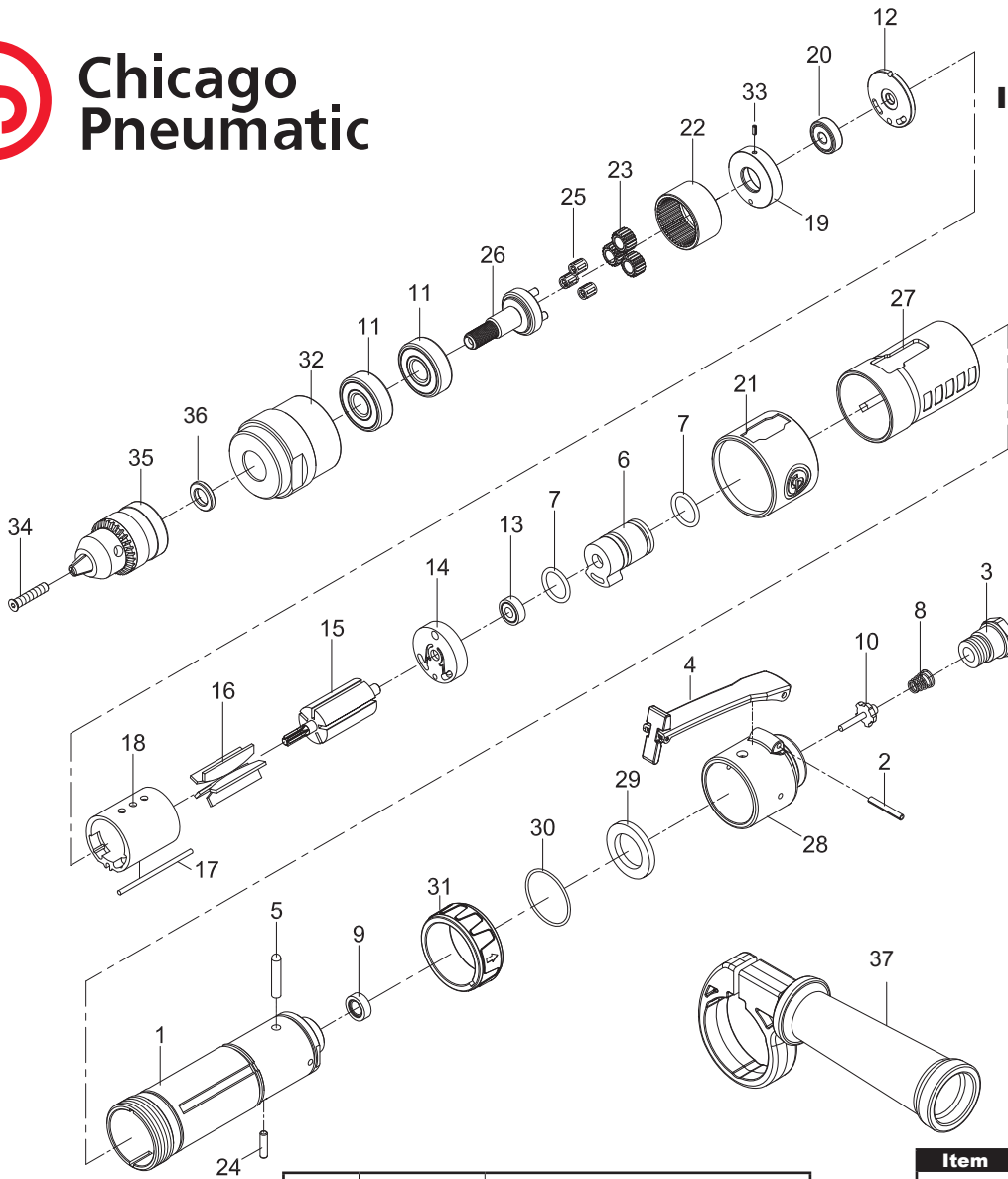




**Chicago
Pneumatic**

**CP887C
INLINE 3/8" KEY DRILL
Serie C**



| | | |
|--|------------|---------------------|
| | 8950900061 | Warning Label |
| | 8940175195 | Operator's Manual |
| | 6159948740 | Safety Instructions |

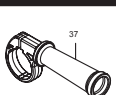
| Item | Glue | Tightening torque |
|---------|-------------|----------------------|
| 01 - 03 | Loctite 243 | ⌚ 22.1 ft.lb - 30 Nm |
| 01 - 32 | | ⌚ 36.9 ft.lb - 50 Nm |

| Ref | CP Part No. | Description | Q'ty |
|----------|-------------------|----------------------------|----------|
| A | 8940175394 | Trigger Kit | 1 |
| 2 | | Spring Pin (3x22l) | 1 |
| 4 | | Throttle Lever | 1 |
| 5 | | Pin | 1 |
| B | 8940175395 | Throttle Kit | 1 |
| 8 | | Spring | 1 |
| 9 | | Rubber Spacer | 1 |
| 10 | | Valve Stem | 1 |
| C | 8940175396 | Regulator Kit | 1 |
| 6 | | Reverse Valve | 1 |
| 7 | | O-Ring (15.8x2.4) | 2 |
| 24 | | Pin (4x13.8l) | 1 |
| 31 | | Reversing Valve Knob | 1 |
| D | 8940175397 | Motor Housing Kit | 1 |
| 1 | 8940175352 | Motor Housing | 1 |
| 27 | | Grip | 1 |
| 28 | | Rear Cover | 1 |
| 30 | | O-Ring (31x1.5) | 1 |
| E | 8940175398 | Rear End-Plate Kit | 1 |
| 13 | | Ball Bearing (696zz) | 1 |
| 14 | | Rear End Plate | 1 |
| F | 8940175399 | Front End-Plate Kit | 1 |
| 12 | | End Plate | 1 |
| 19 | | Front End Plate | 1 |
| 20 | | Ball Bearing (626zz) | 1 |
| 33 | | Spring Pin (2x5l) | 1 |

| Ref | CP Part No. | Description | Q'ty |
|-----------|-------------------|---|----------|
| G | 8940175400 | Gear Box Kit | 1 |
| 22 | | Internal Gear | 1 |
| 23 | | Planet Gear | 3 |
| 25 | | Needle Bearing | 3 |
| 26 | | Work Spindle | 1 |
| H | 8940175401 | Service Gear Kit | |
| | | Include 23(x3) & 25(x3) | |
| SP | 8940175402 | Small Parts Kit | |
| | | Include 2, 5, 12, 17, 24, 29, 30, 33, 34 & 36 | |
| TK | 8940175403 | Tune-Up Kit | |
| | | Include 7(x2), 9 & 16 | |

| | | | |
|----|------------|------------------------------------|---|
| 3 | 8940175354 | Air Inlet | 1 |
| 11 | 2050486953 | Ball Bearing (6201z) | 2 |
| 15 | 2050485903 | Rotor | 1 |
| 16 | 2050485913 | Rotor Blades (Set Of 5) | 1 |
| 18 | 2050485933 | Cylinder | 1 |
| 21 | 8940175362 | Front Sleeve | 1 |
| 32 | 8940175369 | Clamp Nut | 1 |
| 35 | 8940175370 | Key Chuck (3/8") & Key (Not Shown) | 1 |

Recommended Accessories



8940175371
Side Handle



Protecto-lube Oil
CA149661 (4 oz - 0.12 l)
CA000046 (20 oz - 0.59 l)



Airoilene Oil
P089507 (1 gal - 3.8 l)