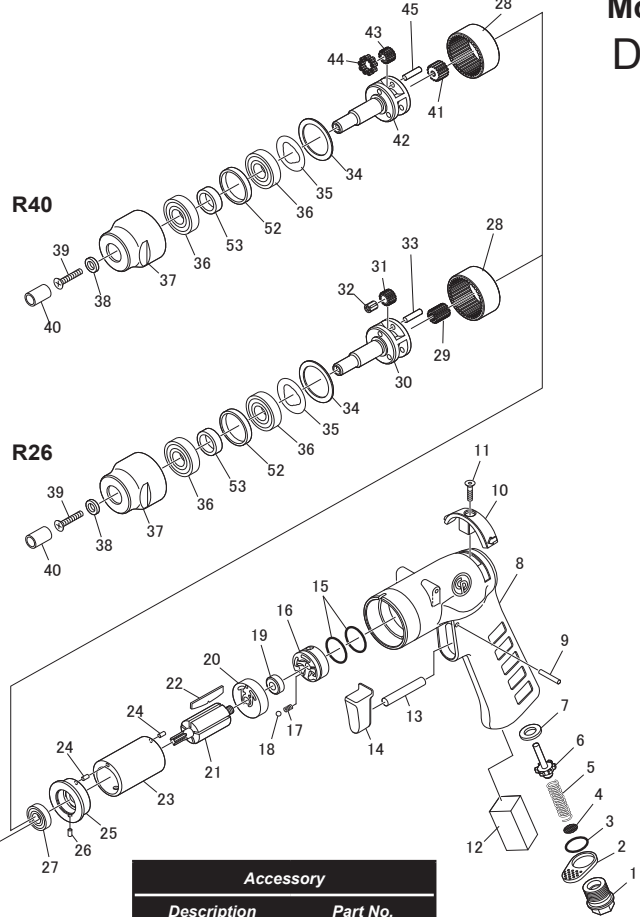
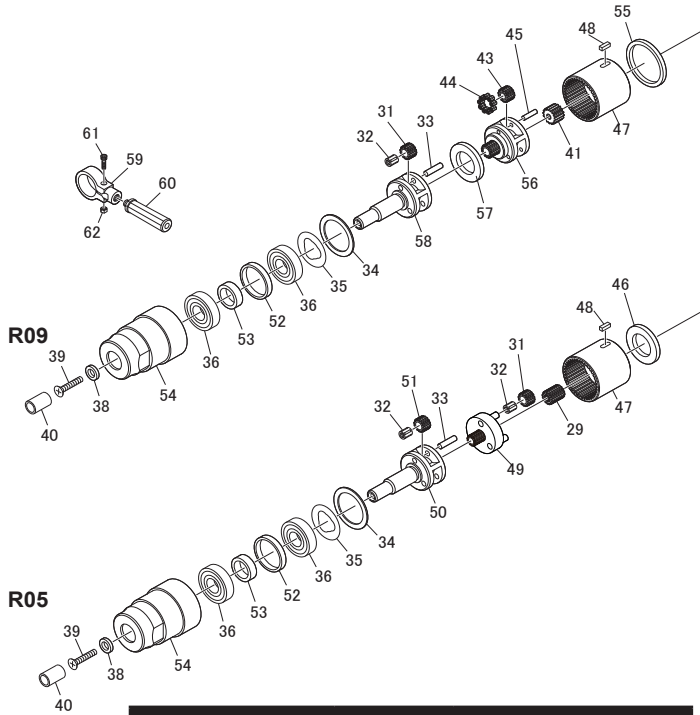




# Chicago Pneumatic

## CP1114R Series Model C DRILL



| Item                        | Grease      | Tightening torque |
|-----------------------------|-------------|-------------------|
| 1                           | /           | 24.5 - 28.4 Nm    |
| 37 / 54                     | /           | 44.1 - 53.9 Nm    |
| 3 / 15 / 17 / 32 / 44       | Alvania     | /                 |
| 28 / 33 / 41 / 43 / 45 / 48 | Molybdenium | /                 |

| Accessory       |          |
|-----------------|----------|
| Description     | Part No. |
| Suspension Bail | 473153   |

| Item No. | Part No.          | Description  | Q'ty |
|----------|-------------------|--|------|
| 6        | CA142460          | Valve  | 1    |
| 7        | C139037           | Seat Throttle                                      | 1    |
| 8        | 8940173993        | Housing-Motor                                      | 1    |
| 21       | 8940174000        | Rotor  | 1    |
| 23       | 8940174002        | Cylinder   | 1    |
| 28       | 8940174004        | Gear-internal(2600)                                | 1    |
| 30       | 8940174006        | Spindle  | 1    |
| 37       | 8940174010        | Housing-Gear                                       | 1    |
| 38       | CA146088          | Chuck Spacer                                       | 1    |
| 42       | 8940174013        | Spindle  | 1    |
| 46       | 8940174017        | Spacer   | 1    |
| 50       | 8940174020        | Spindle  | 1    |
| 54       | 8940174022        | Housing-Gear                                       | 1    |
| 55       | 8940174023        | Spacer   | 1    |
| 56       | 8940174024        | Reduction Spindle                                  | 1    |
| 57       | 8940174025        | SpacerA  | 1    |
| 58       | 8940174026        | Spindle  | 1    |
| 63       | 8940174027        | Chuck R05 - R09                                    | 1    |
| 64       | 8940174028        | Chuck R26 - R40                                    | 1    |
| 65       | 8940174029        | Key Chuck  | 1    |
| <b>A</b> | <b>8940174046</b> | <b>Inlet Kit</b>                                   |      |
| 1        |                   | Inlet Bushing                                      | 1    |
| 2        |                   | Deflector  | 1    |
| 3        |                   | O-Ring   | 1    |
| 4        | CA059037          | Screen   | 1    |
| <b>B</b> | <b>8940174047</b> | <b>Reverse Button Kit</b>                          |      |
| 10       |                   | Button-Reverse                                     | 1    |
| 11       |                   | Screw  | 1    |
| <b>C</b> | <b>8940174048</b> | <b>Trigger Kit</b>                                 |      |
| 9        |                   | Pin-Roll   | 1    |
| 13       |                   | Pin-Throttle                                       | 1    |
| 14       |                   | Trigger  | 1    |
| <b>D</b> | <b>8940174049</b> | <b>Reverse Valve Kit</b>                           |      |
| 15       |                   | O-Ring   | 2    |
| 16       |                   | Reverse Valve                                      | 1    |
| 17       |                   | Spring   | 1    |
| 18       |                   | Steel Ball   | 1    |
| <b>E</b> | <b>8940174050</b> | <b>Rear End Plate Kit</b>                          |      |
| 19       | CA155004          | Ball Bearing                                       | 1    |
| 20       |                   | Plate-Rear End                                     | 1    |
| 24       |                   | Pin-Roll   | 1    |
| <b>F</b> | <b>8940174051</b> | <b>Front End Plate Kit</b>                         |      |
| 24       |                   | Pin-Roll   | 1    |
| 25       |                   | Plate-Front End                                    | 1    |
| 26       |                   | Pin Roll   | 1    |
| 27       | C087834           | Bearing  | 1    |
| <b>G</b> | <b>8940174052</b> | <b>Idler Kit A (for CP1114R09 &amp; CP1114R26)</b> |      |
| 31       |                   | Gear-Idler   | 3    |
| 32       | KF125239          | Bearing Needle                                     | 3    |
| 33       |                   | Pin-Idler  | 3    |

| Item No. | Part No.          | Description  | Q'ty |
|----------|-------------------|--|------|
| <b>H</b> | <b>8940174053</b> | <b>Idler Kit B (for CP1114R05)</b>                     |      |
| 32       | KF125239          | Bearing Needle   | 3    |
| 33       |                   | Pin-Idler  | 3    |
| 51       |                   | Gear-Idler   | 3    |
| <b>I</b> | <b>8940174054</b> | <b>Idler Kit C (for CP1114R09 &amp; CP1114R40)</b>     |      |
| 41       |                   | Pinion Gear  | 1    |
| 43       |                   | Gear-Idler   | 3    |
| 44       | 8940174015        | Needle-Roller  | 27   |
| 45       |                   | Pin-Idler  | 3    |
| <b>J</b> | <b>8940174055</b> | <b>Reduction Spindle Kit (for CP1114R05)</b>           |      |
| 29       |                   | Pinion Gear  | 1    |
| 31       |                   | Gear-Idler   | 3    |
| 32       |                   | Bearing Needle   | 3    |
| 49       |                   | Reduction Spindle                                      | 1    |
| <b>K</b> | <b>8940174056</b> | <b>Bearing Kit</b>                                     |      |
| 34       | 8940174009        | Washer   | 1    |
| 35       |                   | Seal Plate   | 1    |
| 36       |                   | Bearing Ball   | 2    |
| <b>L</b> | <b>8940174057</b> | <b>Spacer Kit</b>                                      |      |
| 52       |                   | Spacer1  | 1    |
| 53       |                   | Spacer2  | 1    |
| <b>M</b> | <b>8940174058</b> | <b>Pinion Gear Kit (for CP1114R05 &amp; CP1114R09)</b> |      |
| 47       |                   | Gear-internal(500)                                     | 1    |
| 48       | CA156611          | Key  | 1    |
| <b>N</b> | <b>8940174059</b> | <b>Tune Up Kit</b>                                     |      |
| 3        |                   | O-Ring   | 1    |
| 4        | CA059037          | Screen   | 1    |
| 5        | CA156613          | Spring-Compression                                     | 1    |
| 12       |                   | Muffler  | 1    |
| 15       |                   | O-Ring   | 2    |
| 22       | 8940174001        | Blade  | 5    |
| <b>O</b> | <b>8940174060</b> | <b>Small Parts Kit</b>                                 |      |
| 11       |                   | Screw  | 1    |
| 17       |                   | Spring   | 1    |
| 18       |                   | Steel Ball   | 1    |
| 24       |                   | Pin-Roll   | 2    |
| 26       |                   | Pin Roll   | 1    |
| 39       | CA146086          | Chuck Screw  | 1    |
| 48       |                   | Key  | 1    |
| <b>P</b> | <b>8940174061</b> | <b>Support Handle Kit</b>                              |      |
| 59       |                   | Ring-Clamp   | 1    |
| 60       |                   | Handle-Support   | 1    |
| 61       |                   | Included in #59  | 1    |
| 62       |                   | Included in #59  | 1    |

|  |            |                     |
|--|------------|---------------------|
|  | 8940173960 | Operator's Manual   |
|  | 8950900061 | Warning label       |
|  | 6159948740 | Safety Instructions |

Spare parts without part number are not sold separately  
Contact us at [www.cp.com](http://www.cp.com)

03/02/2017  
8940174066 Rev. : 03