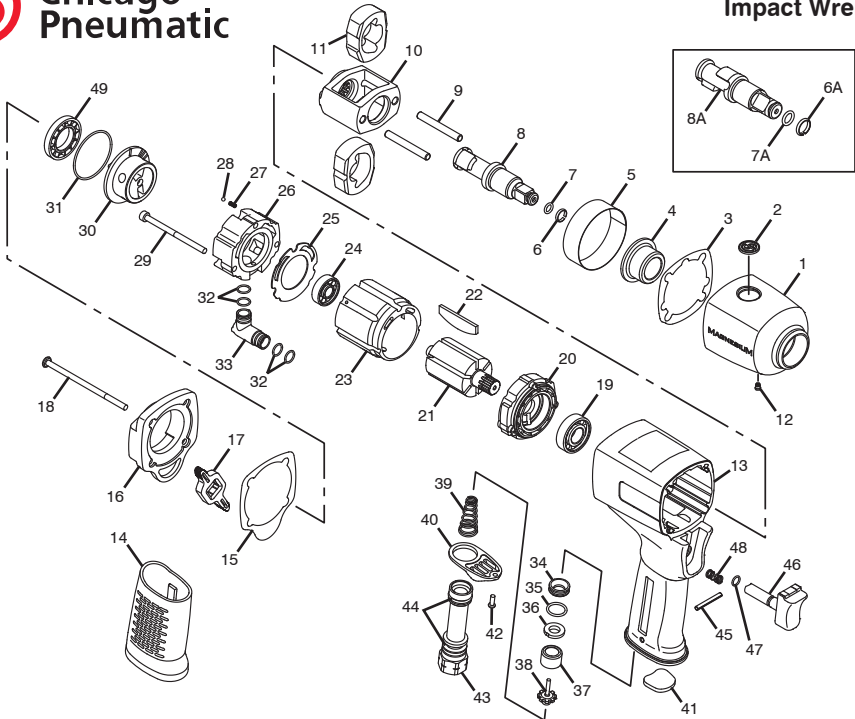




**Chicago
Pneumatic**

**CP8222 & CP8242 Series
Impact Wrench**



Index No.	Part No.	Description	No. Req'd.	Index No.	Part No.	Description	No. Req'd.
1	2050520543	Clutch Housing (Mg)	1	27	2050520833	Spring	1
2	2050520553	CP Logo Coin	1	28	2050520843	Steel Ball	1
3	2050520563	Gasket-Clutch Housing	1	29	2050520853	Screw	3
4	2050520573	Bushing-Clutch Housing	1	30	2050520863	Reverse Valve	1
5	2050520583	Steel Ring	1	31	2050520873	O-Ring	1
6	2050521013	Ring-Friction (CP8222)	1	32	2050520773	O-Ring	4
6A	2050521063	Ring-Friction (CP8242)	1	33	2050520783	Inlet	1
7	2050523803	O-Ring (CP8222)	1	34	2050520883	Insert Bushing	1
7A	2050520593	O-Ring (CP8242)	1	35	2050520893	O-Ring	1
8	2050521023	Anvil (CP8222)	1	36	2050520903	Seal	1
8A	2050521043	Anvil (CP8242)	1	37	2050520913	Bushing	1
9	2050520803	Pin	2	38	2050520923	Valve-Throttle	1
10	2050520813	Cage	1	39	2050520933	Spring-Throttle Valve	1
11	2050520823	Dog	2	40	2050520943	Exhaust-Deflector	1
12	2050520833	Grease Fitting	1	41	2050520953	Muffler	1
13	2050520843	Housing-Motor	1	42	2050520963	Tap Bolt	1
14	2050520823	Rubber Grip	1	43	2050520793	Inlet Bushing	1
15	2050520853	Gasket-Rear Cover	1	44	2050520973	O-Ring	2
16	2050520863	Rear Cover (Mg)	1	45	2050520983	Pin	1
17	2050520873	Lever-Reverse Valve	1	46	2050520803	Lever-Throttle	1
18	2050520883	Screw	4	47	2050520983	O-Ring	1
19	2050520893	Bearing	1	48	2050521003	Spring	1
20	2050520703	Plate-Front End	1	49	2050521773	Rear Gasket	1
21	2050520713	Rotor	1	2050520813	Clutch Housing Assembly (Incl: Index Nos. 1, 2, 4, 12)	1	
22	2050520723	Blade Set (6)	1	2050521033	Anvil (CP8222) (Incl: Index Nos. 6, 7, 8)	1	
23	2050520733	Liner	1	2050521053	Anvil (CP8242) (Incl: Index Nos. 6A, 7A, 8A)	1	
24	2050520743	Bearing	1				
25	2050520753	Gasket-Regulator Base	1				
26	2050520763	Regulator Base	1				

	6159948710	SAFETY INSTRUCTIONS
	2050521983	OPERATOR'S MANUAL
	8940168930	EC DECLARATION