



Tireshop Industry

Advanced Wheel Solutions

People. Passion. Performance.



Chicago Pneumatic provides a full tireshop solution

For all vehicle types



**2 & 3
Wheelers**



**Passenger
Vehicles**



**Pickup trucks
and Vans**



**Light &
Medium Trucks**



**Heavy Trucks
and Buses**



**Agricultural &
Off-Road Machinery**

Chicago Pneumatic One-Stop-Shop for all your tire changing needs

At every step of the way, we are there for you to provide all the needed equipment, tools and accessories for your day-to-day job. From lifting the vehicle to untightening and tightening, we offer a full range of solutions to equip your shop.

We understand the specific needs of maintaining and repairing 2-wheelers, cars and truck fleets. Chicago Pneumatic helps make tough jobs easier. We provide products that are reliable and robust, they offer great ergonomics for user comfort and are easy to use.

Safety on the job is key for us and is always top of mind when developing our products. You can rely on our knowledge, our tools, our equipment and our expert recommendation to make sure you are safe at all times when changing your tires.

In this brochure we will recommend the best tools and equipment for all your different tire changing needs. By following and choosing the appropriate solutions, you will ensure that you will have the best performing tool for your particular application therefore making your job faster and easier, increasing your productivity.

Chicago Pneumatic's dedication to the automotive industry spans decades. Benefit from our expertise, from factory to field, through certified quality testing and training, we develop products for you.

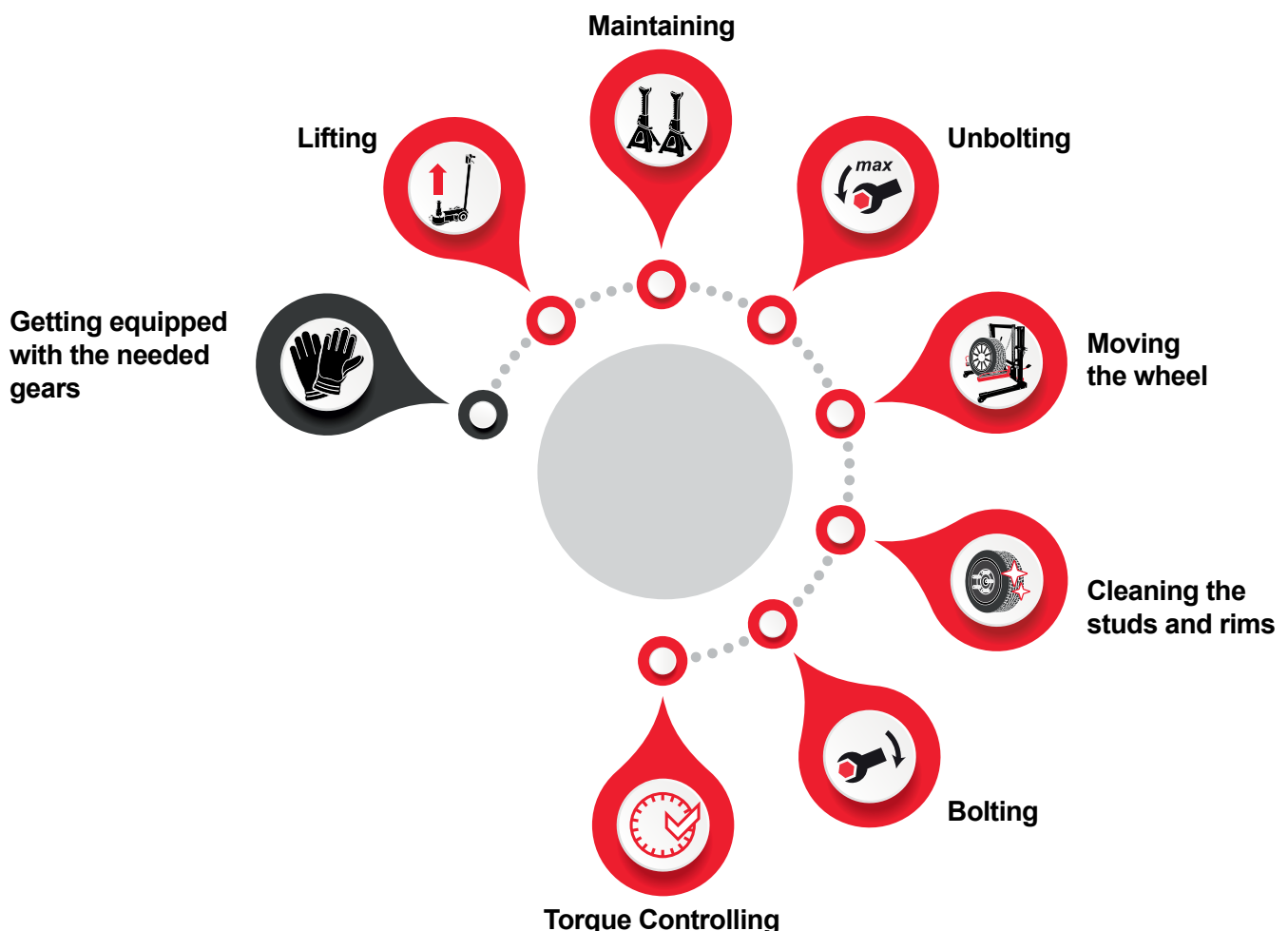
With CP8854 (page 9), and CP86 (page 16) series, combined with the new application CPlinQ, Chicago Pneumatic is starting its transformation to enter a new age.

What does it mean? Chicago Pneumatic is going to provide high added value solutions in terms of:

- Extended Mobility & precision with cordless tools
- Process Control with bolting errors tracking & bolt counting
- Traceability with data collection & reporting.

And more to come in up-coming months and years.

and for all applications



Air tools installation & workshop safety

Recommended Air Tools Installation by Chicago Pneumatic:

Must have

FRL

To set up a proper air flow and pressure

FRL stands for:

- Filter (clean compressed air)
- Regulator (ensures consistency of dynamic pressure)
- Lubricator (adds controlled quantities of oil to reduce friction and improve tool life)

Safety

AIR FUSE

For improved safety, to avoid hose whiplash

Fixing an air fuse between the FRL & the hose will stop air flow in case of hose section, and prevent from potential work place accidents and body damages such as hose whiplash.

Must have

HOSE & CLAMPS

To ensure efficiency at the workplace

Chicago Pneumatic offers a wide range of hoses :

- Different diameters (from 6.5 mm to 25 mm)
- Different lengths (3, 20 or 25 m)
- 4 types (Effi Max, rubber, PVC, polyurethane).

Safety & ergonomics

COUPLING & NIPPLE

To ensure safe and flexible connection between accessories

4 things to consider when choosing coupling & nipple:

- Tool air inlet thread
 - Tool air inlet thread
- Type of coupling (easy flow, quick release, safety, claw)
- Connection type (male, female, hose connection)
 - Profile (Asia, Iso, Euro)

Safety & Ergonomics

HOSE WHIP

For better ergonomics & to avoid premature hose wear

Using a hose whip brings 3 advantages:

- Safety: it protects the operator against whiplash effects in case of breaks at coupling level
- Durability: enables longer tools inlet lifespan and prevent from hose wear
- Ergonomics: facilitate tools switch with a quick connection

Safety & ergonomics

CONNECTING ACCESSORY

To i.e.: AIR FLEX
For better ergonomics & to avoid premature hose wear

Avoid using coupling/nipple at tool inlet (it creates rigidity and increases risks of whiplash. We recommend using Chicago Pneumatic Air Flex connector: it ensures flexibility, ergonomics and safety for the operator. It is suitable for all tools, except percussive tools.

Safety Reminder

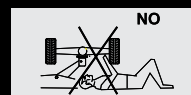
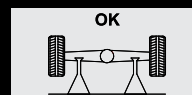
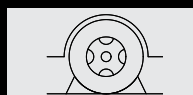
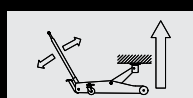
The goal of Chicago Pneumatic is to produce tools and equipment that help the operator work safely and efficiently. The most important safety device for this or any tool is the operator.

WARNING

Multiple Hazards. Read and understand safety instructions supplied with tool before operating or servicing. Failure to do so can result in serious bodily injury.

All tools are designed to operate on a air line pressure of 6.3 bar +/- 0.15 bar in accordance with ISO2787, 8NTC1.2.

! Trolley and air hydraulic jacks



Use jack stands to maintain the vehicle



2 & 3 Wheelers

Unbolting & Bolting

IMPACT WRENCHES



**The Expert
Advice**
- Yann Pasco

Torque wrenches are precision tools, so to ensure that they continue to deliver excellent performance, you should calibrate them once a year and keep them well maintained.

Protect them from shock by storing them in their protective cases and reset them to the lowest value when not being used.



1/2

CP7732C

**POWERFUL, ULTRA LIGHTWEIGHT, EASY
OPERATION AND COMPACT**

460 ft. lbs. / 625 Nm max torque in reverse



3/8

CP721

75 ft.lbs / 102 Nm max torque
in reverse

**COMFORT &
DURABILITY**



3/8

CP7732

450 ft.-lbs / 610 Nm max torque
in reverse

**ULTRA COMPACT &
POWERFUL**

Torque Controlling

1/4" & 3/8" TORQUE WRENCHES

CP8905 & CP8910

**ACCURACY, LONG-LASTING
ACCURACY AND DURABILITY**

9.64" / 245 mm



16.14" / 410 mm



Accuracy: 4% according to the EN ISO
6789:2003 specifications

Capacity:

50 → 250 in.lbs / 5 → 25 Nm for CP8905

15 → 75 ft.lbs / 20 → 100 Nm for CP8910

Clean the studs

STUD CLEANERS

**Recommended with CP2755 To
clean up rusted bolts and to get
a good tightening**



Diameter:
from 0.79 to 1.18 in /
from 20 mm to 30 mm



Passenger Vehicles



The Expert Advice
- Marko Bebek

An impact wrench with a torque limited function enables efficient torque level control, with torque limited to the forward direction to prevent overtightening. The tool won't stop running but the torque will increase more slowly, meaning you can be certain that you haven't overtightened the nut.

Operators should always complete the final tightening with a calibrated torque wrench to ensure that the torque applied is accurate and complies with the vehicle manufacturers' specifications.

Lift

TROLLEY JACKS / SERVICE JACKS

HIGH LIFTING CAPACITY, HIGH DURABILITY, SAFETY

CP80015

VERY LOW PROFILE CONSTRUCTION
(down to 80 mm / 3.1 in)
HIGH LIFTING CAPACITY



1.5 ton capacity - Lifting height up to 21.3 in / 540 mm

CP80020

LOW PROFILE CONSTRUCTION & HIGH LIFTING CAPACITY



1.5 ton capacity - Lifting height up to 21.3 in / 540 mm

CP80030

HIGH LIFTING CAPACITY



3-ton capacity - Lifting height up to 21.6 in / 550 mm

Maintain

JACK STANDS

HIGH QUALITY YET AFFORDABLE JACK STANDS

CP82020 2 Tons

Height up to 16.7 in / 425 mm

CP82030 3 Tons

Height up to 17.9 in / 455 mm



Unbolting & Bolting

1/2" IMPACT WRENCHES



CP8854
CP8854-2

This innovation performs as well as an air tool in terms of lightweight, compactness, vibration, sound and power, and offers the mobility advantage of cordless tools.

- SHUT OFF feature for (80 ft.lbs. / ≈ 120 Nm)
- COMPACT & LIGHTWEIGHT: 7.44 in. - 189 mm & 5.51 lbs. - 2.5 kg
- SAFETY: Low vibrations @ 9.3m/s^2 & Low noise level (sound pressure) @ 87 dB(A)
- HIGH PERFORMANCE 4500 RPM able to deliver 780 ft.lbs. - 1050 Nm as maximum torque in reverse



CP7748
CP7748-2

Power, comfort & durability in your hands!

Most powerful tool in its class
960 ft.lbs / 1,300 Nm maximum real torque in reverse

CP734H

THE "CLASSIC" REFERENCE FOR 1/2" IMPACT TOOLS



445 ft. lbs. / 576 Nm max torque in reverse

CP7748TL

TORQUE LIMITED IN FORWARD AND EXTREME TORQUE IN REVERSE (960 FT.LBS - 1,300 NM)



Torque Limited

66 ft. lbs. / 90 Nm in torque limited position in forward

CP7741
CP7741-2

GREAT PERFORMANCE AND DURABILITY



715 ft.lbs / 970Nm max torque in reverse

Torque Controlling

1/2" TORQUE WRENCHES

CP8915 & CP8917

ACCURACY, LONG-LASTING ACCURACY AND DURABILITY



23.40" / 594 mm

Accuracy: 4% according to the EN ISO 6789:2003 specifications

Capacity:

30 → 150 ft.lbs / 40 → 200 Nm for CP8915

60 → 340 ft.lbs / 50 → 250 Nm for CP8917



Clean the studs

STUD CLEANERS

Recommended with CP2755 To clean up rusted bolts and to get a good tightening



Diameter:
from 0.79 to 1.18 in / from 20 mm to 30 mm



Pickup Trucks & Vans

Lift

TROLLEY JACK

CP80030

HIGH LIFTING CAPACITY



3-ton capacity - Lifting height
up to 21.6 in / 550 mm



The Expert Advice

- Yann Pasco

Operators should always complete the final tightening with a calibrated torque wrench to ensure that the torque applied is accurate and complies with the vehicle manufacturers' specifications.

Maintain

JACK STANDS

HIGH QUALITY YET AFFORDABLE JACK STANDS

CP82020 2 Tons

Height up to 16.7 in / 425 mm

CP82030 3 Tons

Height up to 17.9 in / 455 mm



Unbolting & Bolting

1/2" IMPACT WRENCHES



CP8854 & CP8854-2

This innovation performs as well as an air tool in terms of lightweight, compactness, vibration, sound and power, and offers the mobility advantage of cordless tools.

- SHUT OFF feature for (80 ft.lbs. / ≈ 120 Nm)
- COMPACT & LIGHTWEIGHT: 7.44 in. - 189 mm & 5.51 lbs. - 2.5 kg
- SAFETY: Low vibrations @ 9.3m/s^2 & Low noise level (sound pressure) @ 87 dB(A)
- HIGH PERFORMANCE 4500 RPM able to deliver 780 ft.lbs. – 1050 Nm as maximum torque in reverse

CP7748TL

TORQUE LIMITED IN FORWARD AND
EXTREME TORQUE IN REVERSE
(960 FT.LBS – 1,300 NM)

**Torque
Limited**



66 ft. lbs. / 90 Nm in torque
limited position in forward

CP7741 CP7741-2

GREAT PERFORMANCE AND
DURABILITY



670 ft. lbs. / 900 Nm max
torque in reverse

Torque Controlling

1/2" TORQUE WRENCHES

CP8915 & CP8917

ACCURACY, LONG-LASTING ACCURACY AND DURABILITY

23.40" / 594 mm



Accuracy: 4% according to the EN ISO
6789:2003 specifications

Capacity:

30 → 150 ft.lbs / 40 → 200 Nm for CP8915

60 → 340 ft.lbs / 50 → 250 Nm for CP8917



Clean the studs

STUD CLEANERS

Recommended with CP2755 To
clean up rusted bolts and to get a
good tightening



Diameter:
from 0.79 to 1.18 in / from 20 mm to 30 mm

Small & Medium Size Trucks

Lift

AIR HYDRAULIC JACK

CP85030 30 Tons

HIGH LIFTING CAPACITY, HIGH DURABILITY, SAFETY

Maximum height: 16.1 in /
409 mm at 15 tons



Maintain

JACK STANDS 12 Tons

CP82120

**HIGH CAPACITY, HIGH QUALITY,
QUICK HEIGHT ADJUSTMENTS**

Maximum height
capacity:
17.71 in / 450 mm



The Expert Advice

- Marko Bebek

We created a 6-step guide to
choosing the right air hydraulic jack:

Step 1: Identify which type of vehicle
you need to lift

Step 2: Make sure your hydraulic
jack will fit the height requirements

Step 3: Check the available air
pressure

Find the full article with the detailed 6
steps in our Expert Corner blog.

<http://qr.cp.com/hydraulic-jack-guide>

Unbolting & Bolting

3/4" IMPACT WRENCHES



CP7769
CP7769-6

**POWERFUL, LIGHTWEIGHT
& COMPACT**

1,440 ft.lbs / 1,950Nm of maximum torque
in reverse



3/4"

CP7763D
CP7763D-6

**LIGHTWEIGHT, POWERFUL,
EASY TO USE**

1,300 ft.lbs. / 1760 Nm of maximum
real torque in reverse

CP7763
CP7763-6

COMPACT & POWERFUL



3/4"

1,200 ft.lbs. / 1630 Nm of maximum
real torque in reverse

Torque Controlling

3/4" TORQUE WRENCH

CP8920

LONGLASTING ACCURACY AND DURABILITY

44.30" / 1125 cm



Accuracy: 4% according to the EN ISO
6789:2003 specifications

Capacity:
100 → 550 ft.lbs / 150 → 750 Nm

Move the wheel

WHEEL DOLLY

CP84010

EASY-TO-USE SINGLE WHEEL DOLLY

Maximum capacity: 550 lbs / 250 kg
Fork capacity: 12.01 in / 305 mm



Clean the studs

STUD CLEANERS

Recommended with CP2755 To
clean up rusted bolts and to get a
good tightening



Diameter:
from 0.79 to 1.18 in /
from 20 mm to 30 mm



Heavy Trucks and Buses

Lift

AIR HYDRAULIC JACKS

HIGH LIFTING CAPACITY, HIGH DURABILITY, SAFETY



The Expert Advice

- Marko Bebek

Correctly applied torque is vital to maintaining the safety of a vehicle and its passengers. Torque limited tools are essential to helping tighten wheel nuts to the correct torque. They are specially designed to prevent the overtightening of nuts.

CP85030

30 Tons

Maximum height:
16.1 in / 409 mm at 15 tons

CP85050

50 Tons

Maximum height:
18.5 in / 472 mm at 15 tons

CP85080

80 Tons

Maximum height:
22.16 in / 563 mm at 50 tons



Maintain

JACK STANDS 20 Tons

CP82200

HIGH CAPACITY, HIGH QUALITY, QUICK HEIGHT ADJUSTMENTS

Maximum height
capacity:
19.6 in / 500 mm



Unbolting

1" IMPACT WRENCHES

CP7782
CP7782-6

HIGH TORQUE & COMFORT



1,920 ft.lbs / 2,600 Nm max torque in
reverse for 25.6 lbs. / 11.6 kg



CP7783
CP7783-6

LIGHTWEIGHT, POWERFUL AND SUPER DURABLE



1770 ft.lbs / 2400 Nm max torque in
reverse for 20.9 lbs. / 9.5 kg



Controlled Bolting

1" IMPACT WRENCH

**Torque
Limited**



CP7782TL-6

No more overtightening

1" impact wrench with torque limited in
forward around 370 ft.lbs / 500 Nm



**CP7600
Series**

Our most ergonomic & efficient solution
for trucks and buses wheel maintenance

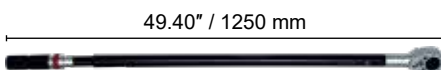
- High tightening precision with an exceptional durability
- High ergonomics with very low noise level and vibration

Torque Controlling

1" TORQUE WRENCH

CP8925

LONGLASTING ACCURACY AND
DURABILITY



Capacity: 150 → 750 ft.lbs / 200 → 1000 Nm
Accuracy: 4% according to the
ISO 6789 – 1 : 2017 specifications

Ergonomics

ERGOSEAT

CP87029

ROBUST, VERSATILE, GREAT PRICE-
TO-QUALITY RATIO



360° front wheels
Equipped with a balancer



Clean the studs

STUD CLEANERS

Recommended with CP2755 To clean
up rusted bolts and to get a good
tightening



Diameter:
from 0.79 to 1.18 in /
from 20 mm to 30 mm



Agricultural & Off-Road Machinery

Lift

AIR HYDRAULIC JACKS

HIGH LIFTING CAPACITY, HIGH DURABILITY, SAFETY

CP85031

30 Tons
Ultra high lifting capacity

Maximum height:
30.39 in / 772 mm at 30 tons

CP85080

80 Tons

Maximum height:
22.16 in / 563 mm at 50 tons

CP85100

100 Tons

Maximum height:
24 in / 610 mm at 33 tons



The Expert Advice

- Christophe Roland

Calibration is a vital step in ensuring tools are working as they should be, giving correct readings, providing a safe working environment for end-users, and ensuring that companies are upholding their legal obligations. The performance of tools and instruments tends to drift over time and every tool loses accuracy to some extent.

Calibration is essential to maintain tools' accuracy and repeatability over time.

Did you know? Only laboratories complying with ISO/IEC 17025 can deliver a valid calibration certificate.

Maintain

JACK STANDS 20 Tons

CP82200

HIGH CAPACITY, HIGH QUALITY,
QUICK HEIGHT ADJUSTMENTS

Maximum height
capacity:
19.6 in / 500 mm



Unbolting

1" IMPACT WRENCHES

CP7783-6
CP7783

LIGHTWEIGHT, POWERFUL AND SUPER DURABLE



1770 ft.lbs / 2400 Nm max torque
in reverse for 20.9 lbs. / 9.5 kg

CP5000

HIGH TORQUE & DURABLE



2,500 ft.lbs / 3,390 Nm max torque
in reverse

Controlled Bolting

Cordless Torque Wrenches / Pneumatic



CP86
Series

QUALITY CONTROL ANYWHERE
PERFORMANCE ANYTIME

- Up to 5970 ft.lbs . 8100 Nm
- High Precision with +/- 4%
- Safe tightening with the second start button
- Data collection, counting sequence

CPLinQ



CP66
Series

THE MOST ROBUST PNEUMATIC
NUTRUNNER IN ITS CLASS

- Up to 3,100 ft.lbs / 4,100 Nm max.
- Very compact, lightweight and powerful
- Very robust with a reliable gearbox and a CP vane type impact wrench motor

Controlled Bolting

1" IMPACT WRENCH

CP7782TL-6

NO MORE
OVERTIGHTENING

Torque
Limited



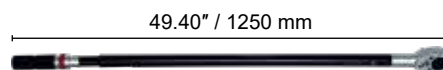
1" impact wrench with torque
limited in forward around 370
ft.lbs / 500 Nm

Torque Controlling

1" TORQUE WRENCH

CP8925

LONGLASTING ACCURACY
AND DURABILITY



49.40" / 1250 mm

Capacity: 150 → 750 ft.lbs / 200 → 1000 Nm
Accuracy: 4% according to the
ISO 6789 – 1 : 2017 specifications

Clean the studs

STUD CLEANERS

Recommended with CP2755 To clean
up rusted bolts and to get a good
tightening



Diameter:
from 0.79 in / 20 mm to
1.18 in / 30 mm

Cleaning studs and rims

TIRE BUFFERS *available in September 2022*

CP871C

HIGH SPEED TIRE BUFFER 22,000 RPM



Jacobs quality 3/8" / 10 mm chuck

CP873C

LOW SPEED TIRE BUFFER 2,800 RPM



Quick change slip chuck (7/16 hexagonal)

Chicago Pneumatic Stud Cleaners

To clean up rusted bolts and to get a good tightening:

- 7 models available
- Standard & deep
- Standard version lenght: 1.46 in / 37 mm, available in 3 diameters: 0.79 in / 20 mm, 0.87 in / 22 mm, 0.94 in / 24 mm
- Deep version lenght: 2.36 in / 60 mm, available in 4 diameters: 0.79 in / 20 mm, 0.87 in / 22 mm, 0.94 in / 24 mm, 1.18 in / 30 mm



ACCESSORIES

Hose kits

Hose kits are equipped with end thread fittings and available in short length, ready to connect and use.



- 26.2 ft / 8 m
- Full range covering 14 combinations of hose inner dimension from 1/4" to 5/8" and male thread fittings from 1/4" to 1/2" in NPT or BSP standards.

Chicago Pneumatic Sockets

A wide range of sockets for impact wrenches:

- Imperial & metric
- Deep & standard
- Different square drive: 3/8", 1/2", 3/4", 1"
- Inch: from 1/4" to 4-1/2"
- mm: from 7 to 70 mm
- Offered in kits or individually
- Forged for a lifetime



<http://qr.cp.com/sockets-brochure>

Chicago Pneumatic Oils

Chicago Pneumatic oil is an oil meant to lubricate air tools & air motors

3 packagings to for end-used needs - liters to



1,32Gal 5L 0,26Gal 1L 4 oz 125ml
with dosing cap

1/2" Torque Bars Set

Contains different torque bars:

- 100 Nm
- 110 Nm
- 120 Nm
- 135 Nm
- 150 Nm



SS435B

For more information, please contact your CP partner:

Use only authorized parts. Any damage or malfunction caused by the use of unauthorized parts is not covered by Warranty or Product Liability.