



Chicago Pneumatic



CP67X8 Series Designed for Intensive Use



**UNIQUE
FEATURES**
Premium Tool

- ✓ Very high durability
- ✓ High torque
- ✓ Excellent ergonomics

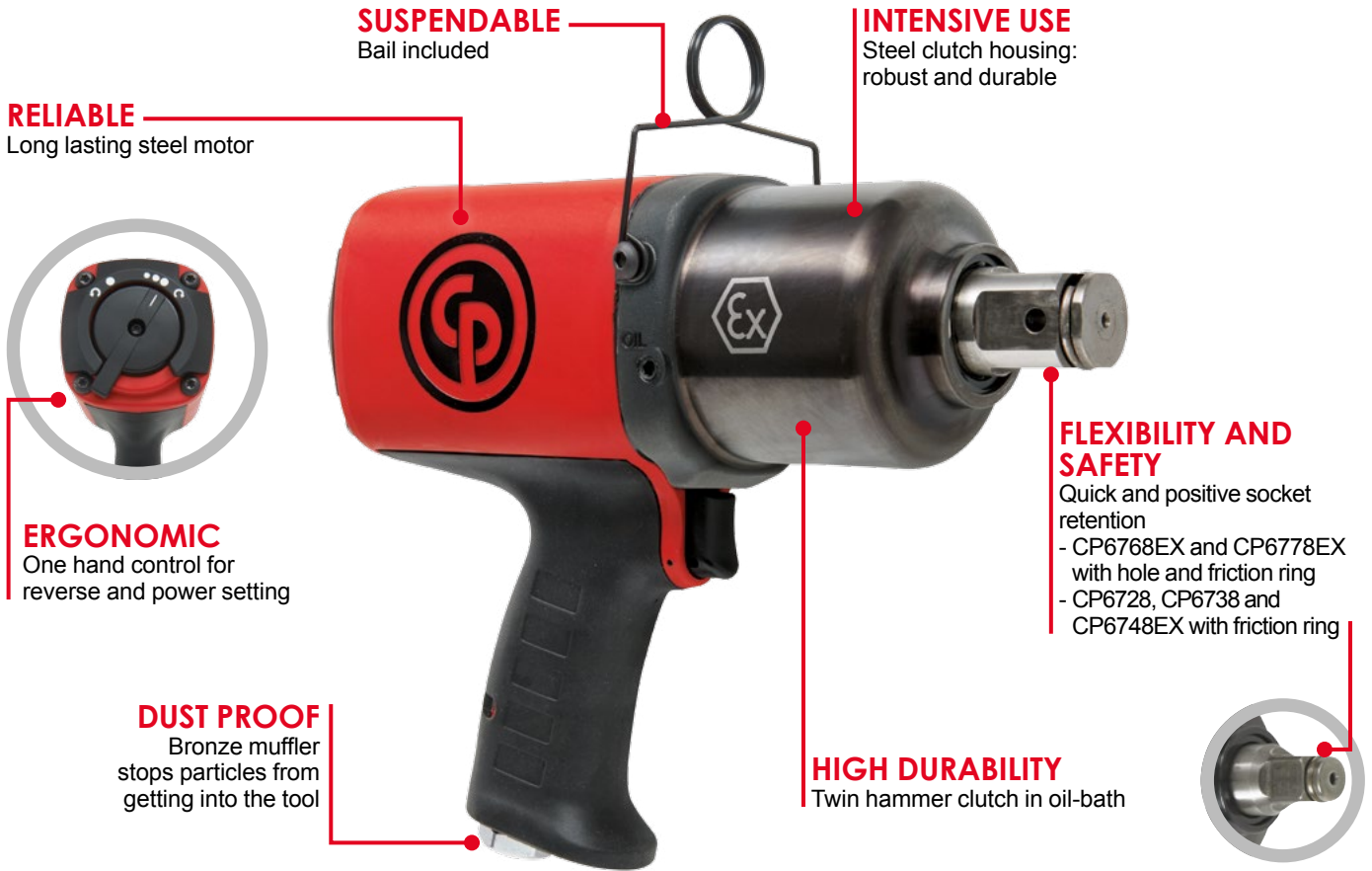


IndustrialTools

People. Passion. Performance.

CP6728/38/48EX/68EX/78EX Series Premium Composite Impact Wrenches

Designed for Intensive Use



FOR HEAVY DUTY MAINTENANCE AND ASSEMBLY APPLICATIONS



ENERGY
Maintenance operations in explosive
environments with ATEX certificated models



MINING AND MINERAL PROCESSING



METAL TRANSFORMATION



MANUFACTURING



NEW RANGE
PREMIUM COMPOSITE

UNIQUE FEATURES
Premium Tool

- ✓ Dust-proof bronze muffler
- ✓ Steel clutch case

- ✓ Dust-proof bronze muffler
- ✓ Steel clutch case
- ✓ ATEX certification
- ✓ IP6 dust-proof tested

- ✓ Dust-proof bronze muffler
- ✓ Steel clutch case
- ✓ ATEX certification
- ✓ IP6 dust-proof tested

Model	Part #	Square Drive	Socket Retainer	Free Speed	Blows / Minute	Working Torque		Max Torque		Tool Weight		Air Cons. @ Load		Sound Pressure	Sound Power	Vibration
				RPM	BPM	ft.-lbs.	Nm	ft.-lbs.	Nm	lbs.	kg	cfm	l/s	dB(A)	dB(A)	m/s ² (k)
CP6728-P05R	615 159 0550	3/8"	Friction ring	11,500	1,300	80-260	110-350	350	475	3.7	1.7	24.2	11.4	89	100	5.2 (1.9)
CP6738-P05R	615 159 0560	1/2"	Friction ring	11,500	1,300	80-260	110-350	350	475	3.7	1.7	24.2	11.4	89	100	5.2 (1.9)
CP6748EX-P11R	615 159 0570	1/2"	Friction ring	8,400	1,200	130-560	180-760	800	1,085	5.4	2.4	30	14.2	93	104	8.7 (2.2)
CP6768EX-P18D	615 159 0580	3/4"	Hole + Ring	5,000	1,050	290-1,030	400-1,400	1,290	1,750	9.8	4.4	38	18	94	105	9.4 (2.4)
CP6778EX-P18D	615 159 0590	1"	Hole + Ring	5,100	1,050	290-1,030	400-1,400	1,290	1,750	10.1	4.6	38	18	94	105	9.4 (2.4)

Hose int. 3/8" (9,5 mm) for the CP6728/38/48 and 1/2" (13 mm) for CP6768/78 - @ 90 PSI (@6.3 Bar)
Dimension details on back.

Listed specifications are for reference only.
Please check tool documentation.



HIGH & FAST POWER

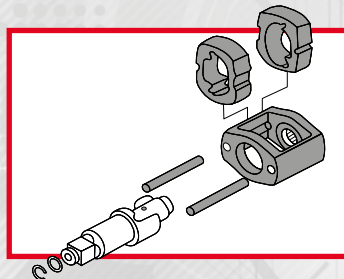
High torque reached in 10 seconds



Model	Max. Torque	
CP6728-P05R	350 ft.-lbs.	475 Nm
CP6738-P05R	350 ft.-lbs.	475 Nm
CP6748EX-P11R	800 ft.-lbs.	1,085 Nm
CP6768EX-P18D	1,290 ft.-lbs.	1,750 Nm
CP6768EX-P18D	1,290 ft.-lbs.	1,750 Nm

SUPERIOR DURABILITY

Long lasting steel motor and robust steel clutch housing



TWIN HAMMER CLUTCH

(also called Double Dog)

BENEFITS

- High energy per blow
- Very durable clutch
- Excellent for hard joints
- All around clutch with a high power/weight ratio

Over 110 years of experience

Since 1901 the Chicago Pneumatic (CP) name has represented reliability and attention to customer needs, with construction, maintenance and production tools and compressors designed for specific industrial applications. Today, CP has a global reach, with local distributors around the world.

Our people start every single day with a passion to research, develop, manufacture and deliver new products that are meant to meet your needs not only today, but tomorrow as well.

To learn more about our extensive range of tools, construction equipment, industrial and portable compressors, accessories and workshop equipment, please visit www.cp.com.



DIMENSIONS



Model	A		B		C	
	in.	mm	in.	mm	in.	mm
CP6728	6.9	175	1.2	31	2.8	72
CP6738	6.9	175	1.2	31	2.8	72
CP6748EX	7.3	185	7.9	200	2.8	72
CP6768EX	9.8	250	8.3	210	3.5	90
CP6778EX	10.0	255	8.3	210	3.5	90

ACCESSORIES SELECTION

FILTER-REGULATOR-LUBRICATOR

Part # NPT	Part # BSP	Size	Type	Max. Flow Rate	
		in.		cfm	l/sec
894 016 8517	894 016 8480	1/2	2 stage	110	50
894 016 8518	894 016 8481	1/2	3 stage	110	50
894 016 8519	894 016 8483	3/4	2 stage	220	100
894 016 8520	894 016 8484	3/4	3 stage	220	100

FRL Stand Part #	Description
615 812 0450	FRL stand for 2 stage 1/2" metallic FRL (frame only)

FRL units will improve the productivity and lifetime of your pneumatic tools.



CP AIR FLEX 360° swivel

Part # NPT	Part # BSP	Size	Max. Flow	
		in.	cfm	l/sec
894 117 1569	894 017 1568	1/4	25	12
894 017 1571	894 017 1570	3/8	74	35
894 017 1567	894 017 1566	1/2	74	35



TUNE-UP KIT

Model	TUNE-UP KIT
CP6728-P05R CP6738-P05R	615 398 9140
CP6748EX-P11R	894 017 1687
CP6768EX-P18D CP6778EX-P18D	615 398 9420

BALANCERS

Corresponding Tool	Balancer Model	Part #	Load Range		Stroke		Net Weight	
			lb.	kg	ft	m	lb.	kg
CP6728/38	CP9920	894 109 9200	2.2-5.5	1.0-2.5	6.5	2,000	4.4	2.0
CP6748EX	CP9921	894 109 9210	4.4-8.8	2.0-4.0	6.5	2,000	4.4	2.0
CP6768EX/78EX	CP9922	894 109 9220	8.8-13.2	4.0-6.0	6.5	2,000	7.3	3.3



SOCKETS

SCAN THE QR CODE TO GO TO THE SOCKETS CATALOG

All our sockets sizes and types are available on www.cp.com



IN LINE OILERS (BSP inlet only)

Part # BSP	Size	Max Pressure		Capacity
	in.	psi	bar	ml
615 812 0490	1/2	500	34	40
615 812 0500	3/4	260	18	110

